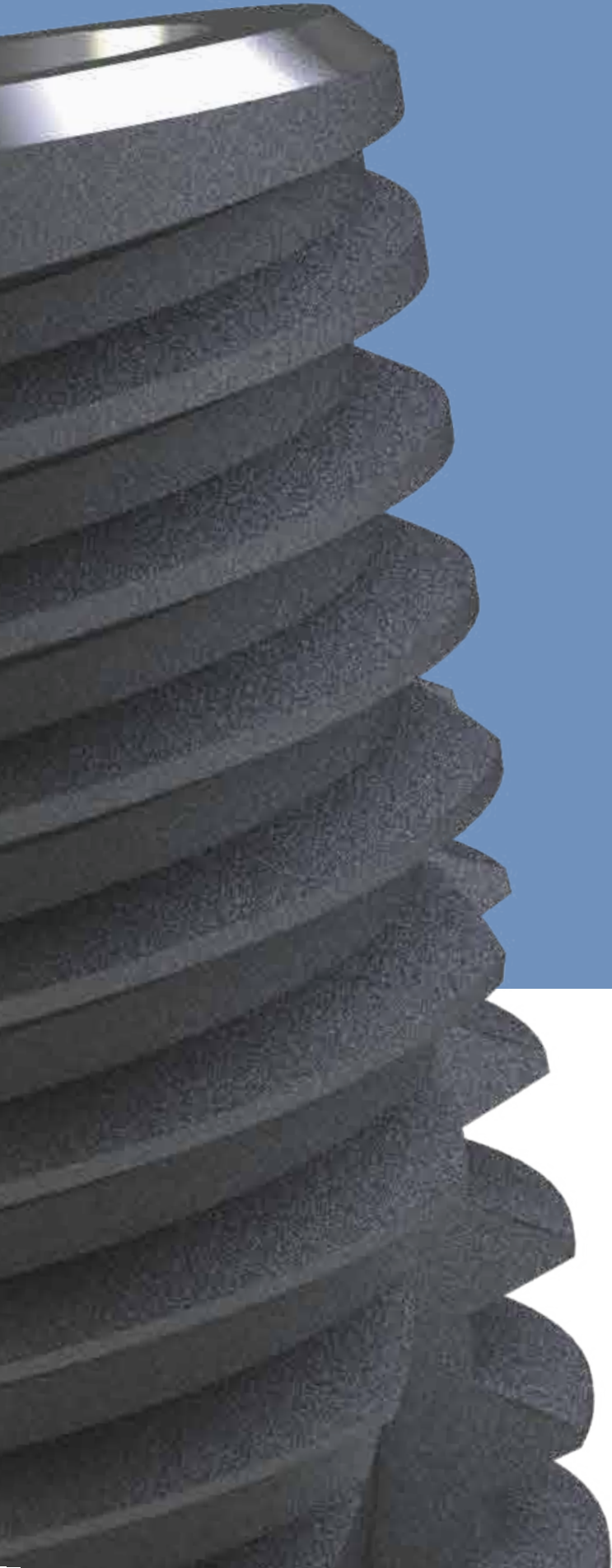




ISO 13485

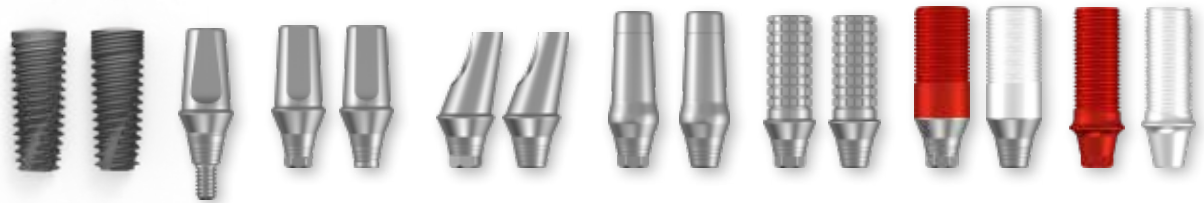


Ufit[®]

dental implant system

Submerged Fixture
Submerged Abutment
Multi-unit Autment
Surgical tools

Contents



Contents.

Company History	04-05
Fixtures	06
SYLBUTMENT	07-11
Fixture Features	12-13
Flow Charts	14-15
Gt2 Fixture / Nt2 Fixture	16-17
Abutments	18-31
Multi-Unit Abutment	32-35
Digital Dentistry	36-39
O-Ring Abutment	40
Denfit Abutment	41
Kit	42-46
Drilling Sequence	47
Ufit-Oss	50-51

Established 2001.

Ufit Implant is a dental implant manufacturer and distributor with all the staff working hard in unison to provide the best product and the excellent service to dentists and patients all over the world.

With continued research and effort by the best technical researchers in Korea that started in 2001 to provide a world class product, the Sylbutment was developed and launched in 2010.

With Ufit Implant continuous research, the solution for loosening of joined fixture and abutment was presented according to clinical studies. We are consistently researching for innovative technologies and high-quality products to provide the highest satisfaction.

Ufit Implant, as we have always been, promises to continually strive for excellence.

The Ufit[®] Dental Implant History

Beginings.

2001 JULY Established T.STRONG

Technology Development.

2004 FEB Established T.STRONG INC.
2004 MAR Acquired Patent Registration for Torque Wrench Driver Adapter
2004 MAY Acquired Patent Registration for Dental Locking Abutment
2007 SEP Acquired Certification from KOREA GOOD MANUFACTURING PRACTICE
2011 JUL Received First Certified ISO 13485 License
2012 JAN Received Domestic Patent for SYLBUTMENT

Abroad.

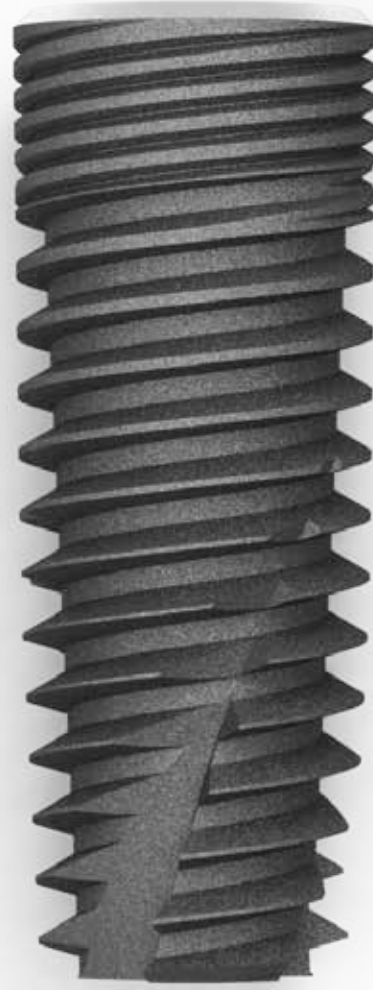
2012 MAR Attend PHARMED & HEALTHCARE VIETNAM
2013 JUL Received Japan Patent for SYLBUTMENT
2014 JUN Received U.S FDA Certificate
2015 JAN Ufit Exclusive Distributors in Kazakhstan
2015 FEB Received China Patent for Sylbutment
2021 MAR Ufit Implant is slected to pitch Deck for top 60 companies at MedTech Innovator
2021 FEB Ufit Exclusive Distributors in Russia
2021 FEB T. STRONG Exclusive Distributors in Iran
2022 DEC Ufit Exclusive Distributors in Uzbekistan
2023 AUG Ufit Exclusive Distributors in India
2023 AUG Ufit Exclusive Distributors in Pakistan
2024 FEB Ufit Exclusive Distributors in Egypt
2024 Aug T. STRONG Exclusive Distributors in Central and South America
2024 Aug Ufit Exclusive Distributors in Syria
2024 Aug Ufit Exclusive Distributors in Lebanon

Fixtures

Nt2



Gt2



SYLBUTMENT

A revolution in dental implant systems

SYLBUTMENT is the product of engineering research in which the perfect contact of two flat surfaces is only possible theoretically but practically impossible.



Unprecedented - a remarkable sealing effect

The Sealing Effect occurs because of elastic modification done by the pressure on the circular bands of the contact sides.



Outstanding durability due to even stress distribution

The even contact surfaces uniformly transfer power from prosthetic appliances to fixtures. Results of fatigue tests showed that not a single fatigue failure occurred when repeated high stress loads were applied.



NO Gap

The circular bands act as a cushion within the limits of elastic modification when chewing force is applied.



NO Loosening

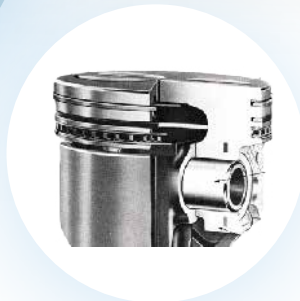
The even surface contact of the circular grooved pattern evenly distributes chewing force within the limits of elasticity, preventing the screw from loosening and the abutment from swaying.

The principles of SYLBUTMENT™

The principles of SYLBUTMENT are easily discovered around us.



Tire treads



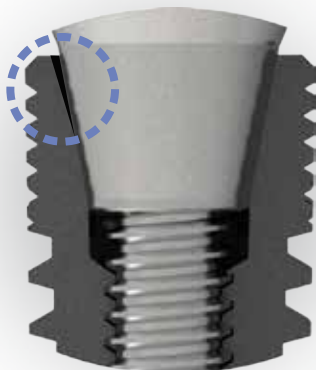
Sealing effect of a piston ring



Soles of shoes

Conventional Abutment and SYLBUTMENT™

In a conventional abutment, the gap between fixture and abutment may increase gradually due to repeated chewing forces. This is due to the contact between the outer surface of the abutment and the inner taper of the fixture, which only occurs on a small surface area due to the roughness of both the two surfaces. On the other hand, SYLBUTMENT increases the contact surfaces by transformation to the grooves. It does not create a gap as the transformation between the two surfaces occurs within the elastic range.



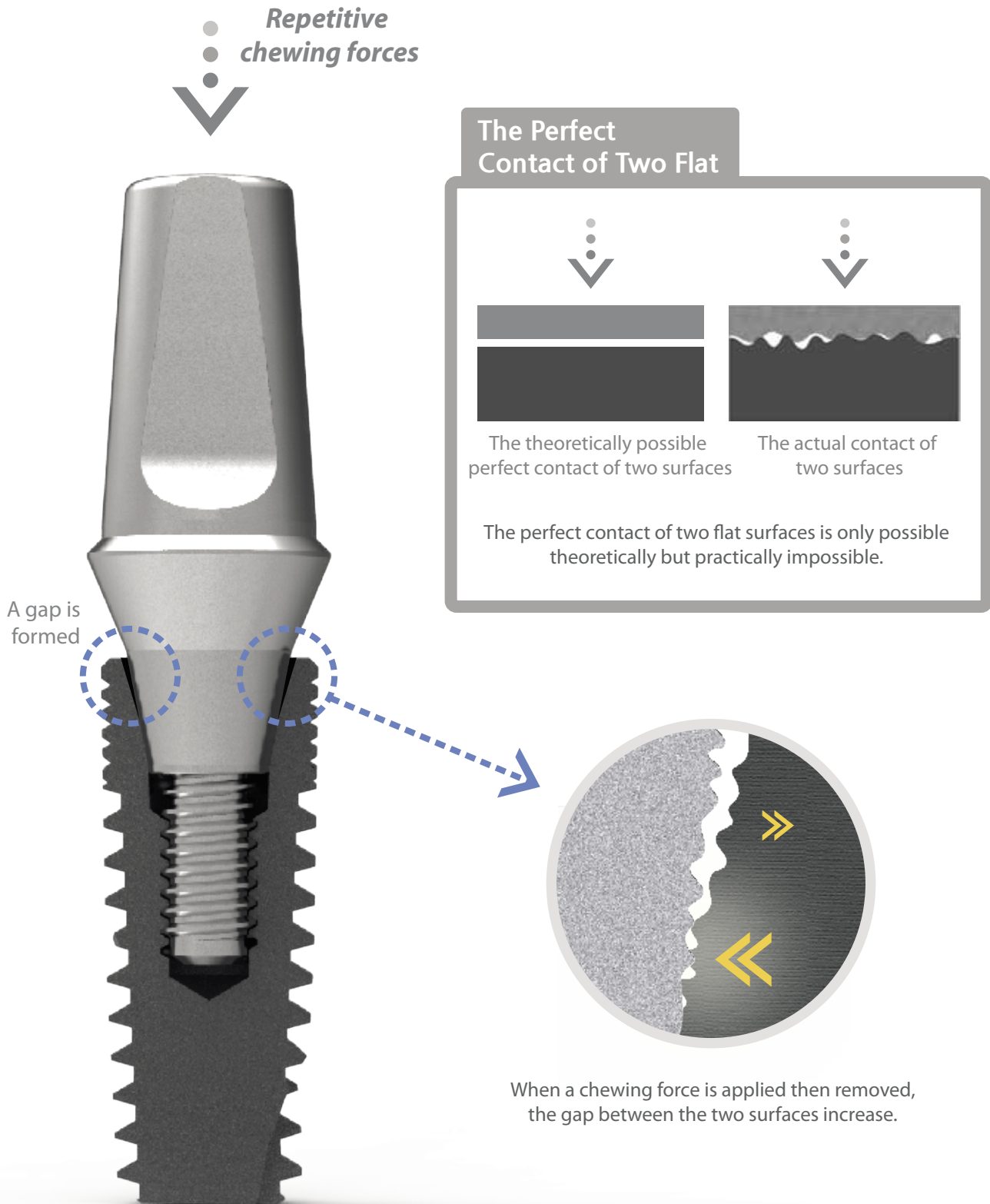
Conventional Abutment



SYLBUTMENT™

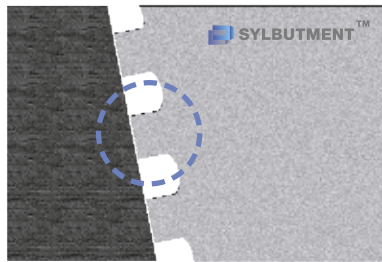
Why does loosening occur in conventional abutments?

The perfect contact of two flat surfaces is only possible theoretically but practically impossible.

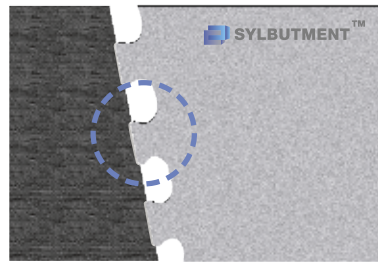


The reason why SYLBUTMENT™ is strong against fatigue (1)

When the abutment screw is fastened, elastic deformation occurs around the grooves of the SYLBUTMENT, creating a force which moves the abutment and fixture together.



Before fastening
the Abutment Screw



After fastening
the Abutment Screw

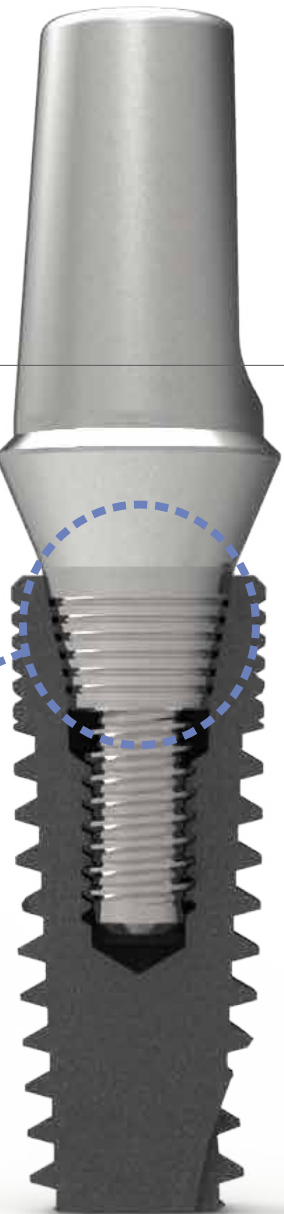
The reason why SYLBUTMENT™ is strong against fatigue (2)

As shown in the figure above, chewing forces are experienced asymmetrically due to the grooves of the SYLBUTMENT acting as an elastic body. This firmly maintains the sealed state of the abutment and distributes the chewing forces evenly in the fixture.



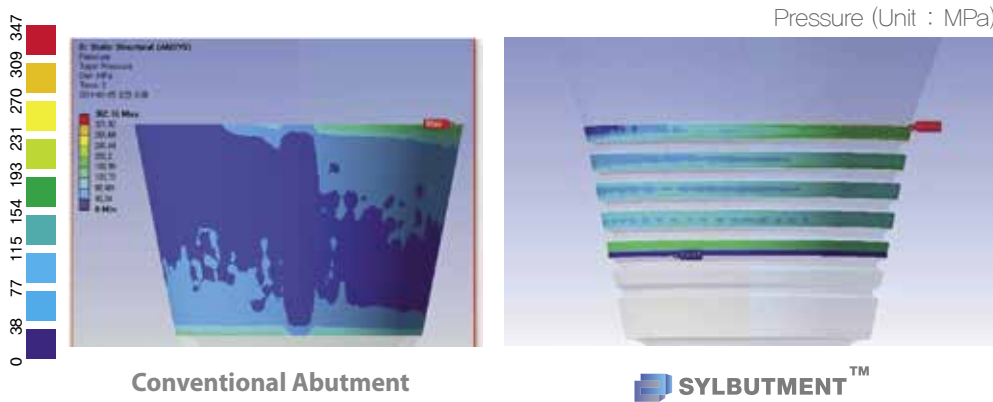
The circular pattern section of
SYLBUTMENT™ receiving chewing forces

SYLBUTMENT™



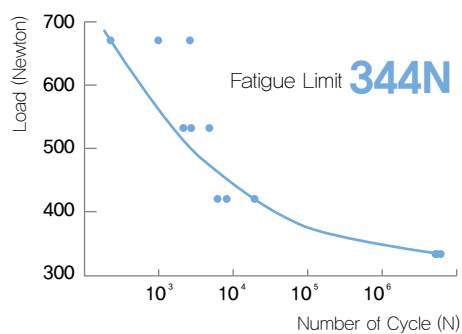
Pressure distribution at the contact surfaces of the Fixtures and the Abutments (FEM Analysis)

When conventional abutments experience asymmetrical chewing forces, the contact surfaces of the fixtures and abutments are separated; however, when a SYLBUTMENT is used, the contact surfaces are not separated.

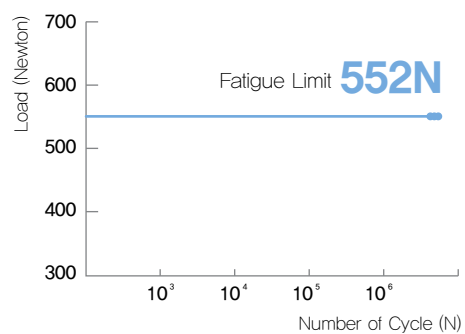


Fatigue tests of the SYLBUTMENT™

Conventional Abutments can withstand 5 million repeated loads of 344N~34N, but the SYLBUTMENT can withstand 5 million repeated loads of 552N~55N.



Conventional Abutment

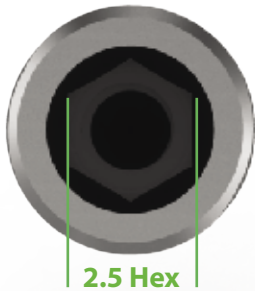


SYLBUTMENT™

Gt2 Fixtures

Connection

2.5 Hex indentation and 11 degree Morse Taper.



2.5 Hex

Micro Thread

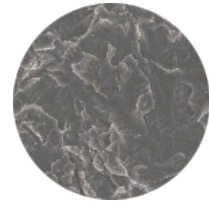
The deep 0.2 mm micro thread increases the surface area and induces a smooth connection with the larger main thread. Additionally, the micro thread increases thread contact with bone thereby improving the initial fixation effect.

Dual Thread



As 0.8mm pitch of dual thread type, the surgery time is reduced. (1.6mm per 1 rotation)

RBM Surface



Surface areas are increased through blasting by highly biocompatible Calcium-Phosphate Media.

Main Thread

When the fixture is inserted into the implant bed, the conical shape and lower deep thread of the fixture increase stability and make immediate loading possible.

Cutting Edge



When placing the implants, the cutting edge of the Twist Type increases Self Tapping ability and minimizes Bone resistance.



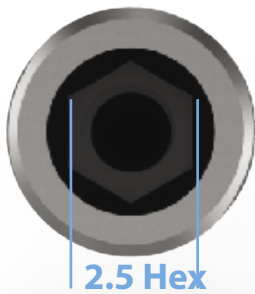
Apex

Apex has the dimension of $D(\text{fixture diameter}) - 0.7\text{mm}$ and the body shape has the overall tapered one.

Nt2 Fixtures

Connection

2.5 Hex fastening Type of 11 degree Morse Taper Type

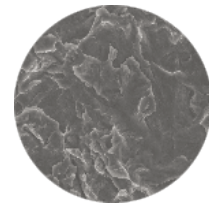


Dual Thread



As 0.8 Dual Thread Type, the placing speed is very fast. (1.6mm per 1 rotation)

RBM Surface



Surface areas are increased through blasting by highly biocompatible Calcium-Phosphate Media.



Main Thread

When the fixture is inserted into the implant bed, the conical shape and lower deep thread of the fixture increase stability and make immediate loading possible.

Cutting Edge



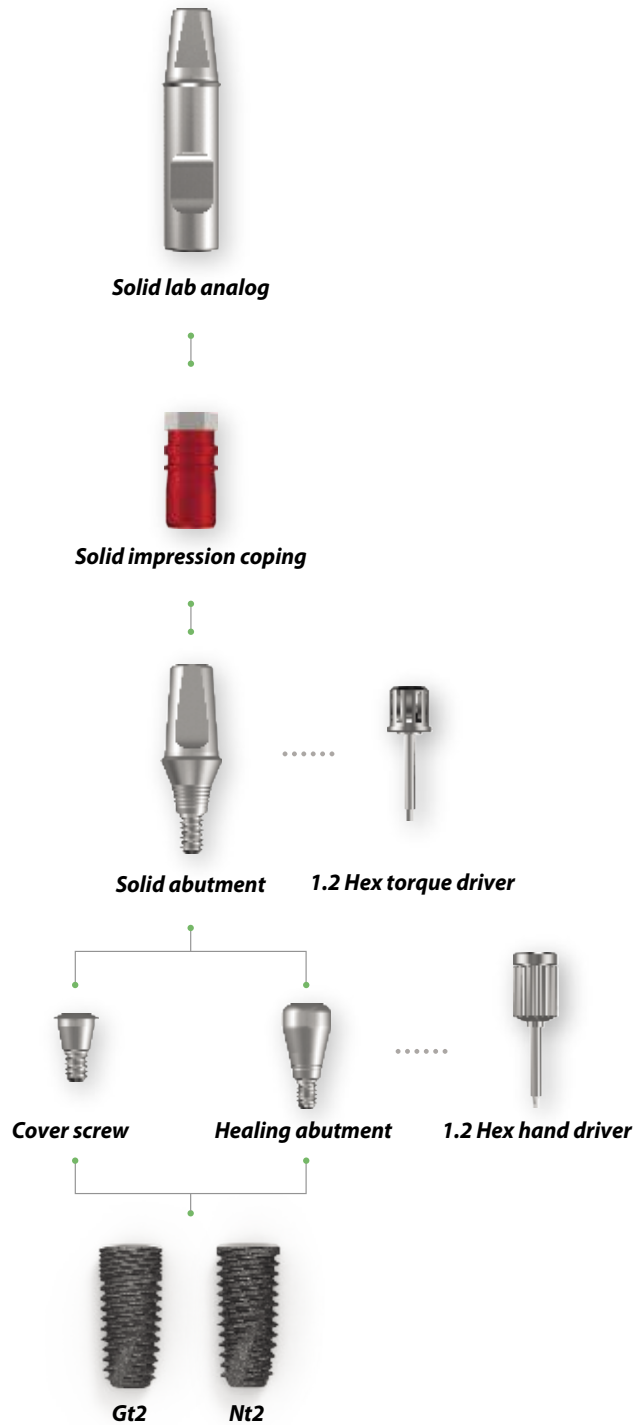
When placing the implants, the cutting edge of the Twist Type increases Self Tapping ability and minimizes Bone resistance.



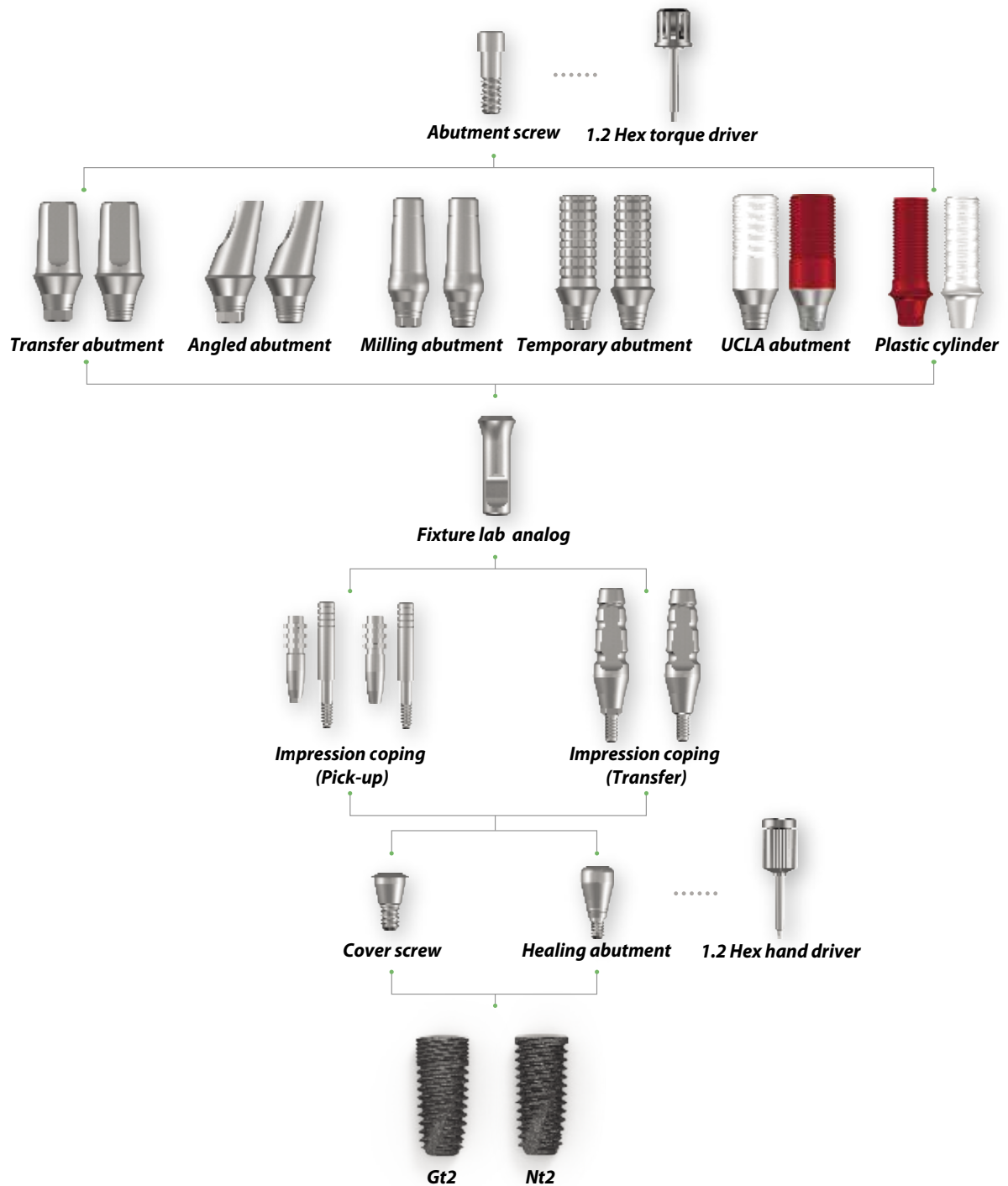
Apex

As a structure of D (Diameter) - 0.7mm, the overall Tapered type

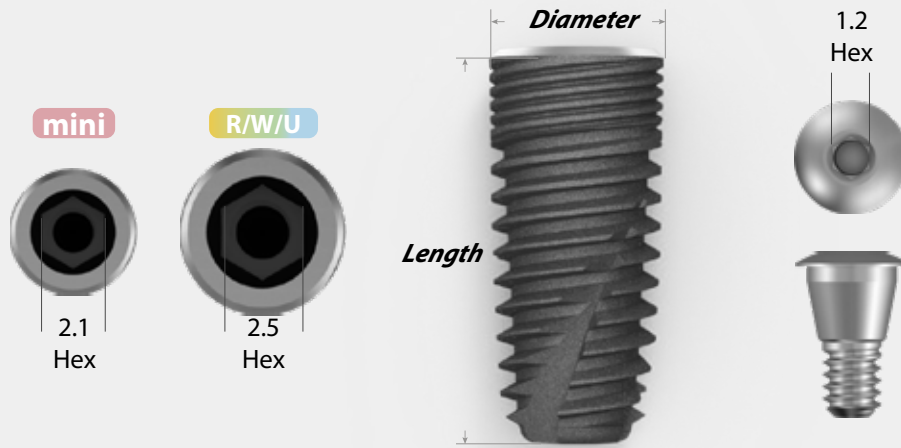
Submerged System Flow Chart



Submerged System Flow Chart



GT2 Fixture



GT2 mini

Length	D3.5
8.5	GT2 35085 MT
10	GT2 3510 MT
11.5	GT2 35115 MT
13	GT2 3513 MT

* Use mini size abutment

- Mini
- Regular
- Wide
- Ultra-wide

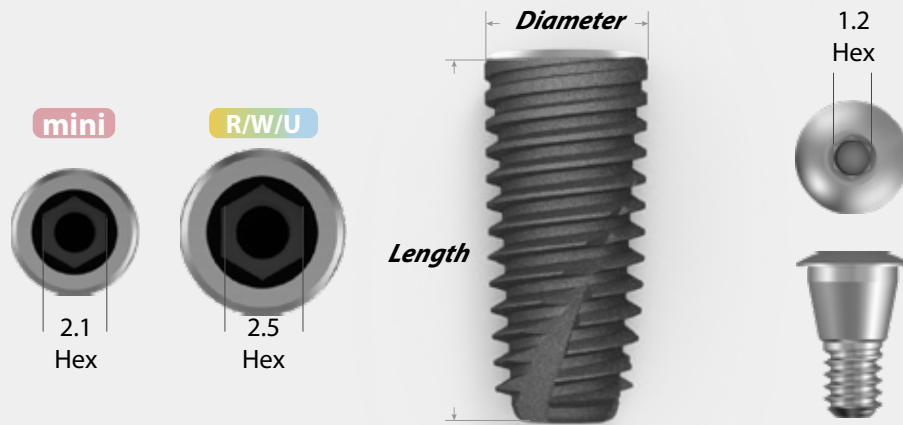
GT2 R/W/U

Length	D4.0	D4.5	D5.0
7	GT2 4007 MT	GT2 4507 MT	GT2 5007 MT
8.5	GT2 40085 MT	GT2 45085 MT	GT2 50085 MT
10	GT2 4010 MT	GT2 4510 MT	GT2 5010 MT
11.5	GT2 40115 MT	GT2 45115 MT	GT2 50115 MT
13	GT2 4013 MT	GT2 4513 MT	GT2 5013 MT

Length	D5.5	D6.0	D6.5	D7.0
7	GT2 5507 MT	GT2 6007 MT	GT2 6507 MT	GT2 7007 MT
8.5	GT2 55085 MT	GT2 60085 MT	GT2 65085 MT	GT2 70085 MT
10	GT2 5510 MT	GT2 6010 MT	GT2 6510 MT	GT2 7010 MT
11.5	GT2 55115 MT	GT2 60115 MT	GT2 65115 MT	GT2 70115 MT
13	GT2 5513 MT	GT2 6013 MT	GT2 6513 MT	GT2 7013 MT

* Use R/W/U size abutment

Nt2 Fixture



Nt2 mini

Length	D3.5
8.5	NT2 35085T
10	NT2 3510 T
11.5	NT2 35115T
13	NT2 3513 T

* Use mini size abutment

- Mini
- Regular
- Wide
- Ultra-wide

Nt2 R/W/U

Length	D4.0	D4.5	D5.0
7	NT2 4007 T	NT2 4507 T	NT2 5007 T
8.5	NT2 40085T	NT2 45085T	NT2 50085T
10	NT2 4010 T	NT2 4510 T	NT2 5010 T
11.5	NT2 40115T	NT2 45115T	NT2 50115T
13	NT2 4013 T	NT2 4513 T	NT2 5013 T

Length	D5.5	D6.0	D6.5	D7.0
7	NT2 5507 T	NT2 6007 T	NT2 6507 T	NT2 7007 T
8.5	NT2 55085T	NT2 60085T	NT2 65085T	NT2 70085T
10	NT2 5510 T	NT2 6010 T	NT2 6510 T	NT2 7010 T
11.5	NT2 55115T	NT2 60115T	NT2 65115T	NT2 70115T
13	NT2 5513 T	NT2 6013 T	NT2 6513 T	NT2 7013 T

* Use R/W/U size abutment

Submerged Abutment

- Mini
- Regular
- Wide
- Ultra-wide



Cover screw **mini**

Height

<i>0.5</i>	MICS 5005
<i>2</i>	MICS 5020

Cover screw **R/W/U**

Height

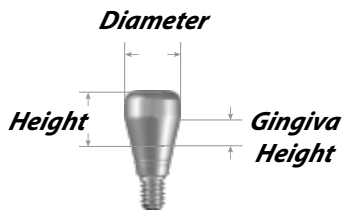
<i>0.5</i>	22HCSR 5005
<i>2</i>	22HCSR 5020

Method

Use 1.2 Hex hand driver
5~8Ncm Joining torque

Usage

Used to prevent foreign materials from entering after the fixture insertion



Healing abutment **mini**

	GH	Height 3	Height 4	Height 5	Height 7
D4.0	1	MHA 4013			
	2		MHA 4024	MHA 4025	
	3				MHA 4037
D4.5	1	MHA 4513			
	2		MHA 4524	MHA 4525	
	3				MHA 4537

Healing abutment **R/W/U**

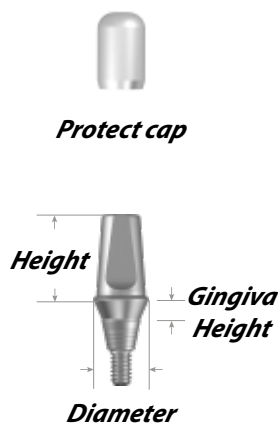
	GH	Height 3	Height 4	Height 5	Height 7
D4.0	1	SHA 401030			
	2		SHA 402040	SHA 402050	
	3				SHA 403070
D4.5	1	SHA 451030			
	2		SHA 452040	SHA 452050	
	3				SHA 453070
D5.0	1	SHA 501030			
	2		SHA 502040	SHA 502050	
	3				SHA 503070
D5.5	1	SHA 551030			
	2		SHA 552040	SHA 552050	
	3				SHA 553070
D6.0	1	SHA 601030			
	2		SHA 602040	SHA 602050	
	3				SHA 603070
D6.5	1	SHA 651030			
	2		SHA 652040	SHA 652050	
	3				SHA 653070

Method

Use 1.2 Hex hand driver
5~8Ncm of joining torque

Usage

Used to protect the connecting part of the implant
Acts as the shape of the gingiva after surgery
Abutment is chosen according to the patient's gingival height.



Solid abutment **mini**



	<i>H</i>	<i>GH 1</i>	<i>GH 2</i>	<i>GH 3</i>	<i>GH 4</i>	<i>GH 5</i>
	4	MSA 4014	MSA 4024	MSA 4034	MSA 4044	MSA 4054
D4.0	5.5	MSA 4015	MSA 4025	MSA 4035	MSA 4045	MSA 4055
	7	MSA 4017	MSA 4027	MSA 4037	MSA 4047	MSA 4057
	4	MSA 4514	MSA 4524	MSA 4534	MSA 4544	MSA 4554
D4.5	5.5	MSA 4515	MSA 4525	MSA 4535	MSA 4545	MSA 4555
	7	MSA 4517	MSA 4527	MSA 4537	MSA 4547	MSA 4557

Solid abutment



	<i>H</i>	<i>GH 1</i>	<i>GH 2</i>	<i>GH 3</i>	<i>GH 4</i>	<i>GH 5</i>
	4	SSA 401040	SSA 402040	SSA 403040	SSA 404040	SSA 405040
D4.0	5.5	SSA 401055	SSA 402055	SSA 403055	SSA 404055	SSA 405055
	7	SSA 401070	SSA 402070	SSA 403070	SSA 404070	SSA 405070
	4	SSA 451040	SSA 452040	SSA 453040	SSA 454040	SSA 455040
D4.5	5.5	SSA 451055	SSA 452055	SSA 453055	SSA 454055	SSA 455055
	7	SSA 451070	SSA 452070	SSA 453070	SSA 454070	SSA 455070
	4	SSA 501040	SSA 502040	SSA 503040	SSA 504040	SSA 505040
D5.0	5.5	SSA 501055	SSA 502055	SSA 503055	SSA 504055	SSA 505055
	7	SSA 501070	SSA 502070	SSA 503070	SSA 504070	SSA 505070
	4	SSA 551040	SSA 552040	SSA 553040	SSA 554040	SSA 555040
D5.5	5.5	SSA 551055	SSA 552055	SSA 553055	SSA 554055	SSA 555055
	7	SSA 551070	SSA 552070	SSA 553070	SSA 554070	SSA 555070
	4	SSA 601040	SSA 602040	SSA 603040	SSA 604040	SSA 605040
D6.0	5.5	SSA 601055	SSA 602055	SSA 603055	SSA 604055	SSA 605055
	7	SSA 601070	SSA 602070	SSA 603070	SSA 604070	SSA 605070
	4	SSA 651040	SSA 652040	SSA 653040	SSA 654040	SSA 655040
D6.5	5.5	SSA 651055	SSA 652055	SSA 653055	SSA 654055	SSA 655055
	7	SSA 651070	SSA 652070	SSA 653070	SSA 654070	SSA 655070

Method

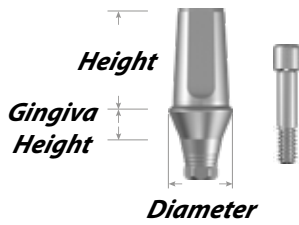
Use 1.2 Hex torque driver
25~35Ncm joining torque

Components

Solid abutment + Protect cap

Usage

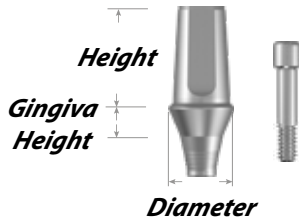
Used on the conventional cement type produced prosthesis
All-in-one abutment and screw structure



Transfer abutment Hex mini



	<i>H</i>	<i>GH 1</i>	<i>GH 2</i>	<i>GH 3</i>	<i>GH 4</i>	<i>GH 5</i>
	4	MTA 4014H	MTA 4024H	MTA 4034H	MTA 4044H	MTA 4054H
D4.0	5.5	MTA 4015H	MTA 4025H	MTA 4035H	MTA 4045H	MTA 4055H
	7	MTA 4017H	MTA 4027H	MTA 4037H	MTA 4047H	MTA 4057H
	4	MTA 4514H	MTA 4524H	MTA 4534H	MTA 4544H	MTA 4554H
D4.5	5.5	MTA 4515H	MTA 4525H	MTA 4535H	MTA 4545H	MTA 4555H
	7	MTA 4517H	MTA 4527H	MTA 4537H	MTA 4547H	MTA 4557H



Transfer abutment Non-Hex mini



	<i>H</i>	<i>GH 1</i>	<i>GH 2</i>	<i>GH 3</i>	<i>GH 4</i>	<i>GH 5</i>
	4	MTA 4014N	MTA 4024N	MTA 4034N	MTA 4044N	MTA 4054N
D4.0	5.5	MTA 4015N	MTA 4025N	MTA 4035N	MTA 4045N	MTA 4055N
	7	MTA 4017N	MTA 4027N	MTA 4037N	MTA 4047N	MTA 4057N
	4	MTA 4514N	MTA 4524N	MTA 4534N	MTA 4544N	MTA 4554N
D4.5	5.5	MTA 4515N	MTA 4525N	MTA 4535N	MTA 4545N	MTA 4555N
	7	MTA 4517N	MTA 4527N	MTA 4537N	MTA 4547N	MTA 4557N

Method

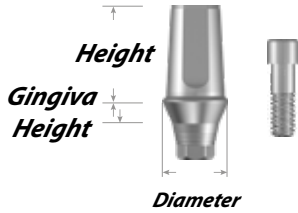
Use 1.2 Hex torque driver
25~35Ncm joining torque

Components

Transfer abutment + Abutment screw
Choice of variety of sizes according to gingival height

Usage

Conventional cement retained type abutment



Transfer abutment Hex R/W/U



	<i>H</i>	<i>GH 1</i>	<i>GH 2</i>	<i>GH 3</i>	<i>GH 4</i>	<i>GH 5</i>
	4	STA 401040H	STA 402040H	STA 403040H	STA 404040H	STA 405040H
D4.0	5.5	STA 401055H	STA 402055H	STA 403055H	STA 404055H	STA 405055H
	7	STA 401070H	STA 402070H	STA 403070H	STA 404070H	STA 405070H
	4	STA 451040H	STA 452040H	STA 453040H	STA 454040H	STA 455040H
D4.5	5.5	STA 451055H	STA 452055H	STA 453055H	STA 454055H	STA 455055H
	7	STA 451070H	STA 452070H	STA 453070H	STA 454070H	STA 455070H
	4	STA 501040H	STA 502040H	STA 503040H	STA 504040H	STA 505040H
D5.0	5.5	STA 501055H	STA 502055H	STA 503055H	STA 504055H	STA 505055H
	7	STA 501070H	STA 502070H	STA 503070H	STA 504070H	STA 505070H
	4	STA 551040H	STA 552040H	STA 553040H	STA 554040H	STA 555040H
D5.5	5.5	STA 551055H	STA 552055H	STA 553055H	STA 554055H	STA 555055H
	7	STA 551070H	STA 552070H	STA 553070H	STA 554070H	STA 555070H
	4	STA 601040H	STA 602040H	STA 603040H	STA 604040H	STA 605040H
D6.0	5.5	STA 601055H	STA 602055H	STA 603055H	STA 604055H	STA 605055H
	7	STA 601070H	STA 602070H	STA 603070H	STA 604070H	STA 605070H
	4	STA 651040H	STA 652040H	STA 653040H	STA 654040H	STA 655040H
D6.5	5.5	STA 651055H	STA 652055H	STA 653055H	STA 654055H	STA 655055H
	7	STA 651070H	STA 652070H	STA 653070H	STA 654070H	STA 655070H

Method

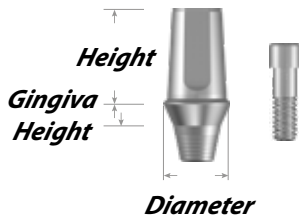
Use 1.2 Hex torque driver
25~35Ncm joining torque

Components

Transfer abutment + Abutment screw
Choice of variety of sizes according to gingival height

Usage

Conventional cement retained type abutment



Transfer abutment Non-Hex R/W/U



	<i>H</i>	<i>GH 1</i>	<i>GH 2</i>	<i>GH 3</i>	<i>GH 4</i>	<i>GH 5</i>
	4	STA 401040N	STA 402040N	STA 403040N	STA 404040N	STA 405040N
D4.0	5.5	STA 401055N	STA 402055N	STA 403055N	STA 404055N	STA 405055N
	7	STA 401070N	STA 402070N	STA 403070N	STA 404070N	STA 405070N
	4	STA 451040N	STA 452040N	STA 453040N	STA 454040N	STA 455040N
D4.5	5.5	STA 451055N	STA 452055N	STA 453055N	STA 454055N	STA 455055N
	7	STA 451070N	STA 452070N	STA 453070N	STA 454070N	STA 455070N
	4	STA 501040N	STA 502040N	STA 503040N	STA 504040N	STA 505040N
D5.0	5.5	STA 501055N	STA 502055N	STA 503055N	STA 504055N	STA 505055N
	7	STA 501070N	STA 502070N	STA 503070N	STA 504070N	STA 505070N
	4	STA 551040N	STA 552040N	STA 553040N	STA 554040N	STA 555040N
D5.5	5.5	STA 551055N	STA 552055N	STA 553055N	STA 554055N	STA 555055N
	7	STA 551070N	STA 552070N	STA 553070N	STA 554070N	STA 555070N
	4	STA 601040N	STA 602040N	STA 603040N	STA 604040N	STA 605040N
D6.0	5.5	STA 601055N	STA 602055N	STA 603055N	STA 604055N	STA 605055N
	7	STA 601070N	STA 602070N	STA 603070N	STA 604070N	STA 605070N
	4	STA 651040N	STA 652040N	STA 653040N	STA 654040N	STA 655040N
D6.5	5.5	STA 651055N	STA 652055N	STA 653055N	STA 654055N	STA 655055N
	7	STA 651070N	STA 652070N	STA 653070N	STA 654070N	STA 655070N

Method

Use 1.2 Hex torque driver
25~35Ncm joining torque

Components

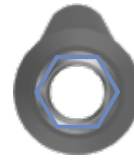
Transfer abutment + Abutment screw
Choice of variety of sizes according to gingival height

Usage

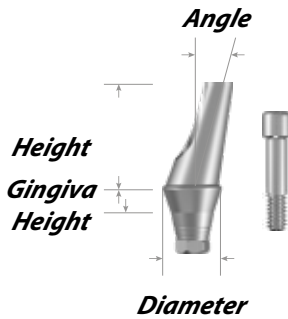
Conventional cement retained type abutment



● **A Type**



● **B Type**



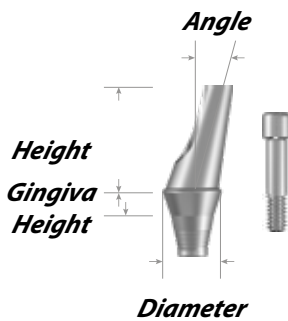
Angled abutment Hex **mini**



A Type	A	GH 1	GH 2	GH 3	GH 4	GH 5
D4.0	15	MAA 4011A	MAA 4021A	MAA 4031A	MAA 4041A	MAA 4051A
	25	MAA 4012A	MAA 4022A	MAA 4032A	MAA 4042A	MAA 4052A
D4.5	15	MAA 4511A	MAA 4521A	MAA 4531A	MAA 4541A	MAA 4551A
	25	MAA 4512A	MAA 4522A	MAA 4532A	MAA 4542A	MAA 4552A

B type	A	G/H 1	G/H 2	G/H 3	G/H 4	G/H 5
D4.0	15	MAA 4011B	MAA 4021B	MAA 4031B	MAA 4041B	MAA 4051B
	25	MAA 4012B	MAA 4022B	MAA 4032B	MAA 4042B	MAA 4052B
D4.5	15	MAA 4511B	MAA 4521B	MAA 4531B	MAA 4541B	MAA 4551B
	25	MAA 4512B	MAA 4522B	MAA 4532B	MAA 4542B	MAA 4552B

H = 7mm



Angled abutment Non-Hex **mini**



	A	GH 1	GH 2	GH 3	GH 4	GH 5
D4.0	15	MAA 4011N	MAA 4021N	MAA 4031N	MAA 4041N	MAA 4051N
	25	MAA 4012N	MAA 4022N	MAA 4032N	MAA 4042N	MAA 4052N
D4.5	15	MAA 4511N	MAA 4521N	MAA 4531N	MAA 4541N	MAA 4551N
	25	MAA 4512N	MAA 4522N	MAA 4532N	MAA 4542N	MAA 4552N

H = 7mm

Method

Use 1.2 Hex torque driver
25~35Ncm joining torque

Components

Angled abutment + Abutment screw
15° / 25° composition

Usage

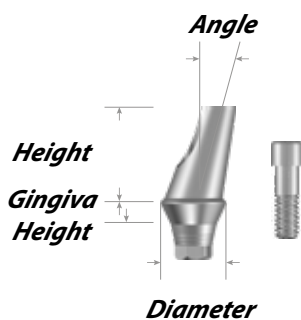
Conventional cement retained type abutment
Used in revising the fixture's path
Used in cases when the prosthesis' path needs to be adjusted



A Type



B Type



Angled abutment Hex R/W/U



A Type	A	GH 1	GH 2	GH 3	GH 4	GH 5
D4.0	15	SAA 401015A	SAA 402015A	SAA 403015A	SAA 404015A	SAA 405015A
	25	SAA 401025A	SAA 402025A	SAA 403025A	SAA 404025A	SAA 405025A
D4.5	15	SAA 451015A	SAA 452015A	SAA 453015A	SAA 454015A	SAA 455015A
	25	SAA 451025A	SAA 452025A	SAA 453025A	SAA 454025A	SAA 455025A
D5.0	15	SAA 501015A	SAA 502015A	SAA 503015A	SAA 504015A	SAA 505015A
	25	SAA 501025A	SAA 502025A	SAA 503025A	SAA 504025A	SAA 505025A
D5.5	15	SAA 551015A	SAA 552015A	SAA 553015A	SAA 554015A	SAA 555015A
	25	SAA 551025A	SAA 552025A	SAA 553025A	SAA 554025A	SAA 555025A
D6.0	15	SAA 601015A	SAA 602015A	SAA 603015A	SAA 604015A	SAA 605015A
	25	SAA 601025A	SAA 602025A	SAA 603025A	SAA 604025A	SAA 605025A
D6.5	15	SAA 651015A	SAA 652015A	SAA 653015A	SAA 654015A	SAA 655015A
	25	SAA 651025A	SAA 652025A	SAA 653025A	SAA 654025A	SAA 655025A

B type	A	GH 1	GH 2	GH 3	GH 4	GH 5
D4.0	15	SAA 401015B	SAA 402015B	SAA 403015B	SAA 404015B	SAA 405015B
	25	SAA 401025B	SAA 402025B	SAA 403025B	SAA 404025B	SAA 405025B
D4.5	15	SAA 451015B	SAA 452015B	SAA 453015B	SAA 454015B	SAA 455015B
	25	SAA 451025B	SAA 452025B	SAA 453025B	SAA 454025B	SAA 455025B
D5.0	15	SAA 501015B	SAA 502015B	SAA 503015B	SAA 504015B	SAA 505015B
	25	SAA 501025B	SAA 502025B	SAA 503025B	SAA 504025B	SAA 505025B
D5.5	15	SAA 551015B	SAA 552015B	SAA 553015B	SAA 554015B	SAA 555015B
	25	SAA 551025B	SAA 552025B	SAA 553025B	SAA 554025B	SAA 555025B
D6.0	15	SAA 601015B	SAA 602015B	SAA 603015B	SAA 604015B	SAA 605015B
	25	SAA 601025B	SAA 602025B	SAA 603025B	SAA 604025B	SAA 605025B
D6.5	15	SAA 651015B	SAA 652015B	SAA 653015B	SAA 654015B	SAA 655015B
	25	SAA 651025B	SAA 652025B	SAA 653025B	SAA 654025B	SAA 655025B

H = 7mm

Method

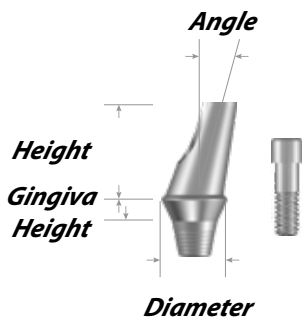
Use 1.2 Hex torque driver
25~35Ncm joining torque

Components

Angled abutment + Abutment screw
15° / 25° composition

Usage

Conventional cement retained type abutment
Used in revising the fixture's path
Used in cases when the prosthesis' path needs to be adjusted



Angled abutment Non-Hex R/W/U



	<i>A</i>	<i>GH 1</i>	<i>GH 2</i>	<i>GH 3</i>	<i>GH 4</i>	<i>GH 5</i>
D4.0	15	SAA 401015N	SAA 402015N	SAA 403015N	SAA 404015N	SAA 405015N
	25	SAA 401025N	SAA 402025N	SAA 403025N	SAA 404025N	SAA 405025N
D4.5	15	SAA 451015N	SAA 452015N	SAA 453015N	SAA 454015N	SAA 455015N
	25	SAA 451025N	SAA 452025N	SAA 453025N	SAA 454025N	SAA 455025N
D5.0	15	SAA 501015N	SAA 502015N	SAA 503015N	SAA 504015N	SAA 505015N
	25	SAA 501025N	SAA 502025N	SAA 503025N	SAA 504025N	SAA 505025N
D5.5	15	SAA 551015N	SAA 552015N	SAA 553015N	SAA 554015N	SAA 555015N
	25	SAA 551025N	SAA 552025N	SAA 553025N	SAA 554025N	SAA 555025N
D6.0	15	SAA 601015N	SAA 602015N	SAA 603015N	SAA 604015N	SAA 605015N
	25	SAA 601025N	SAA 602025N	SAA 603025N	SAA 604025N	SAA 605025N
D6.5	15	SAA 651015N	SAA 652015N	SAA 653015N	SAA 654015N	SAA 655015N
	25	SAA 651025N	SAA 652025N	SAA 653025N	SAA 654025N	SAA 655025N

H = 7mm

Method

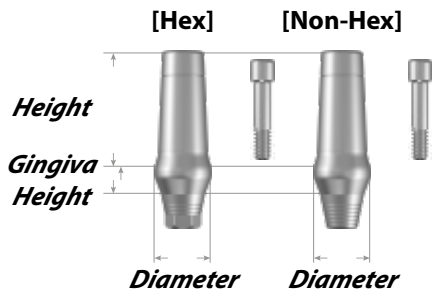
Use 1.2 Hex torque driver
25~35Ncm joining torque

Components

Angled abutment + Abutment screw
15° / 25° composition

Usage

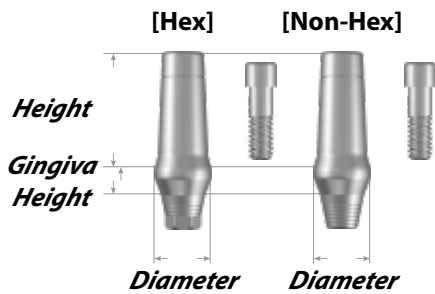
Conventional cement retained type abutment
Used in revising the fixture's path
Used in cases when the prosthesis' path needs to be adjusted



Milling abutment mini



	GH 2		GH 4	
	Hex	Non-Hex	Hex	Non-Hex
D4.5	MMA 4529H	MMA 4529N	MMA 4549H	MMA 4549N



Milling abutment R/W/U



	GH 2		GH 4	
	Hex	Non-Hex	Hex	Non-Hex
D5.0	SMA 5029H	SMA 5029N	SMA 5049H	SMA 5049N
D5.5	SMA 5529H	SMA 5529N	SMA 5549H	SMA 5549N
D6.0	SMA 6029H	SMA 6029N	SMA 6049H	SMA 6049N

H = 9mm

Method

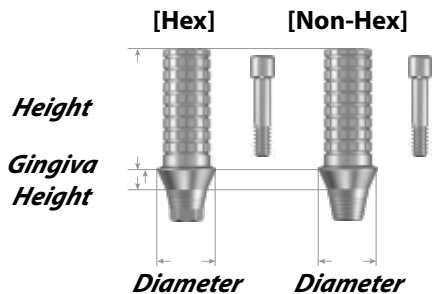
Use 1.2 Hex torque driver
25~35Ncm joining torque

Components

Milling abutment + Abutment screw

Usage

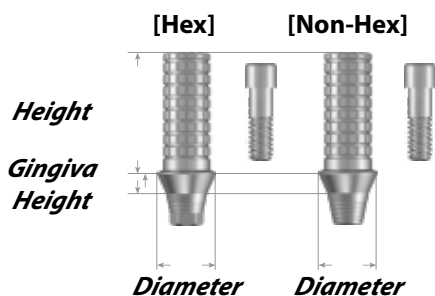
Used in cases when the height or margin of abutment needs to be customized



Temporary abutment mini



	GH 2		GH 4	
	Hex	Non-Hex	Hex	Non-Hex
D4.5	MTPA 452H	MTPA 452N	MTPA 454H	MTPA 454N



Temporary abutment R/W/U



	GH 2		GH 4	
	Hex	Non-Hex	Hex	Non-Hex
D5.0	STPA 502H	STPA 502N	STPA 504H	STPA 504N

H = 10mm

Method

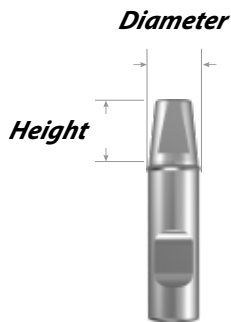
Use 1.2 Hex torque driver
25~35Ncm joining torque

Components

Temporary abutment + Abutment screw

Usage

Used in cases making the temporary prosthesis



Solid lab analog M/R/W/U

	<i>Height 4</i>	<i>Height 5.5</i>	<i>Height 7</i>
D4.0	S-SLA 4040	S-SLA 4055	S-SLA 4070
D4.5	S-SLA 4540	S-SLA 4555	S-SLA 4570
D5.0	S-SLA 5040	S-SLA 5055	S-SLA 5070
D5.5	S-SLA 5540	S-SLA 5555	S-SLA 5570
D6.0	S-SLA 6040	S-SLA 6055	S-SLA 6070
D6.5	S-SLA 6540	S-SLA 6555	S-SLA 6570

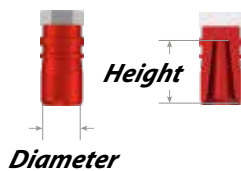
Method

Used on solid abutment features

Used to produce the model for solid Impression coping connection pick up inside the oral cavity

Usage

Solid abutment is materialized in the oral cavity on the working replica



Solid impression coping M/R/W/U

	<i>Height 4</i>	<i>Height 5.5</i>	<i>Height 7</i>
D4.0	S-IC 4040	S-IC 4055	S-IC 4070
D4.5	S-IC 4540	S-IC 4555	S-IC 4570
D5.0	S-IC 5040	S-IC 5055	S-IC 5070
D5.5	S-IC 5540	S-IC 5555	S-IC 5570
D6.0	S-IC 6040	S-IC 6055	S-IC 6070
D6.5	S-IC 6540	S-IC 6555	S-IC 6570

Method

Used on solid Abutment features

Integration of existing positioning cylinder and Impression Cap



Fixture lab analog mini

M-FLA 35

Fixture lab analog R/W/U

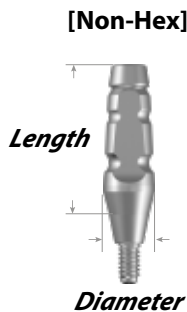
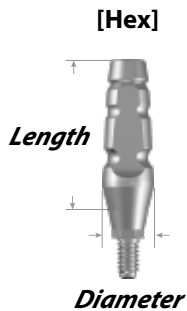
S-FLA 45

Method

For Gt2/Nt2
 Used on abutment features
 Used to produce the model for solid Impression coping
 Connection pick up inside the oral cavity

Usage

Fixture is materialized in the oral cavity on the working replica



Impression coping (Transfer) mini

	<i>Length 11</i>		<i>Length 15</i>	
	<i>Hex</i>	<i>Non-Hex</i>	<i>Hex</i>	<i>Non-Hex</i>
D4.0	M-ICT 4011H	M-ICT 4011N	M-ICT 4015H	M-ICT 4015N

Impression coping (Transfer) R/W/U

	<i>Length 11</i>		<i>Length 15</i>	
	<i>Hex</i>	<i>Non-Hex</i>	<i>Hex</i>	<i>Non-Hex</i>
D4.5	S-ICT 4511H	S-ICT 4511N	S-ICT 4515H	S-ICT 4515N

Method

Use 1.2 Hex hand driver

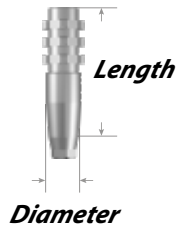
Components

Impression coping + Guide pin (2 pieces)
 11mm / 15mm Coping size

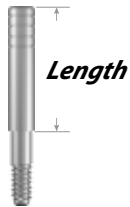
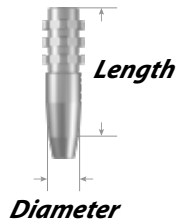
Usage

Existing tray is used

[Hex]



[Non-Hex]



Impression coping (Pick-up) **mini**

	<i>Length 10</i>		<i>Length 15</i>	
	<i>Hex</i>	<i>Non-Hex</i>	<i>Hex</i>	<i>Non-Hex</i>
D4.0	M-ICP 4010H	M-ICP 4010N	M-ICP 4015H	M-ICP 4015N

Impression coping (Pick-up) **R/W/U**

	<i>Length 10</i>		<i>Length 15</i>	
	<i>Hex</i>	<i>Non-Hex</i>	<i>Hex</i>	<i>Non-Hex</i>
D4.0	S-ICP 4010H	S-ICP 4010N	S-ICP 4015H	S-ICP 4015N
D4.5	S-ICP 4510H	S-ICP 4510N	S-ICP 4515H	S-ICP 4515N
D5.0	S-ICP 5010H	S-ICP 5010N	S-ICP 5015H	S-ICP 5015N
D5.5	S-ICP 5510H	S-ICP 5510N	S-ICP 5515H	S-ICP 5515N
D6.0	S-ICP 6010H	S-ICP 6010N	S-ICP 6015H	S-ICP 6015N

Impression coping Guide pin (Pick-up) **mini**

	<i>Length 10</i>	<i>Length 15</i>	<i>Length 20</i>
	M-PG 100	M-PG 150	M-PG 200

Impression coping Guide pin (Pick-up) **R/W/U**

	<i>Length 10</i>	<i>Length 15</i>	<i>Length 20</i>
	S-PG 100	S-PG 150	S-PG 200

Method

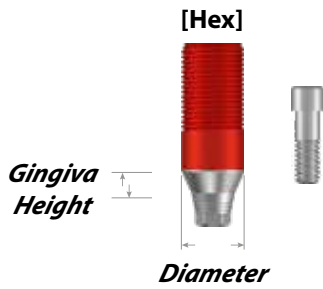
Use hand or 1.2 Hex hand driver

Components

Impression coping + Guide pin
10mm/15mm/20mm Guide pin size

Usage

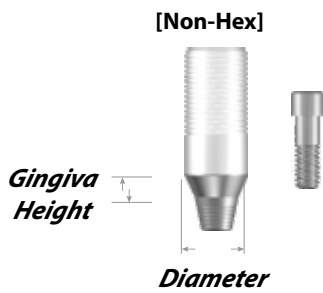
Use of custom tray
Increases the ease of various guide pin size



UCLA Abutment mini

	<i>Hex</i>	<i>Non-Hex</i>
D4.0	MUT 402H	MUT 402N

GH = 2mm



UCLA Abutment R/W/U

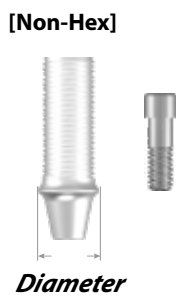
	<i>Hex</i>	<i>Non-Hex</i>
D4.5	SUT 452H	SUT 452N

GH = 2mm



Plastic Cylinder mini

	<i>Hex</i>	<i>Non-Hex</i>
D4.0	M-PSC 40H	M-PSC 40N

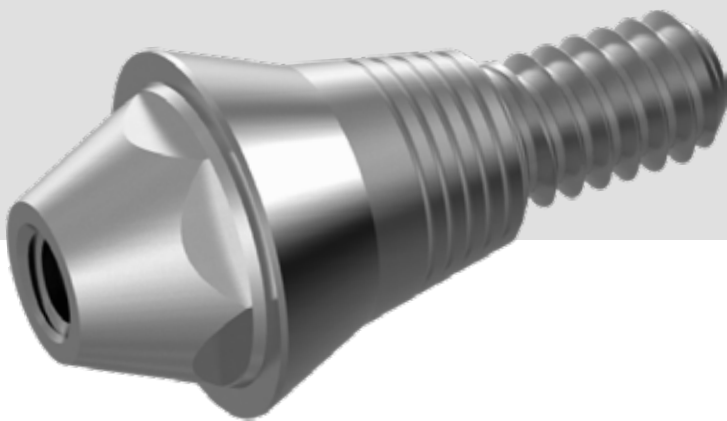


Plastic Cylinder R/W/U

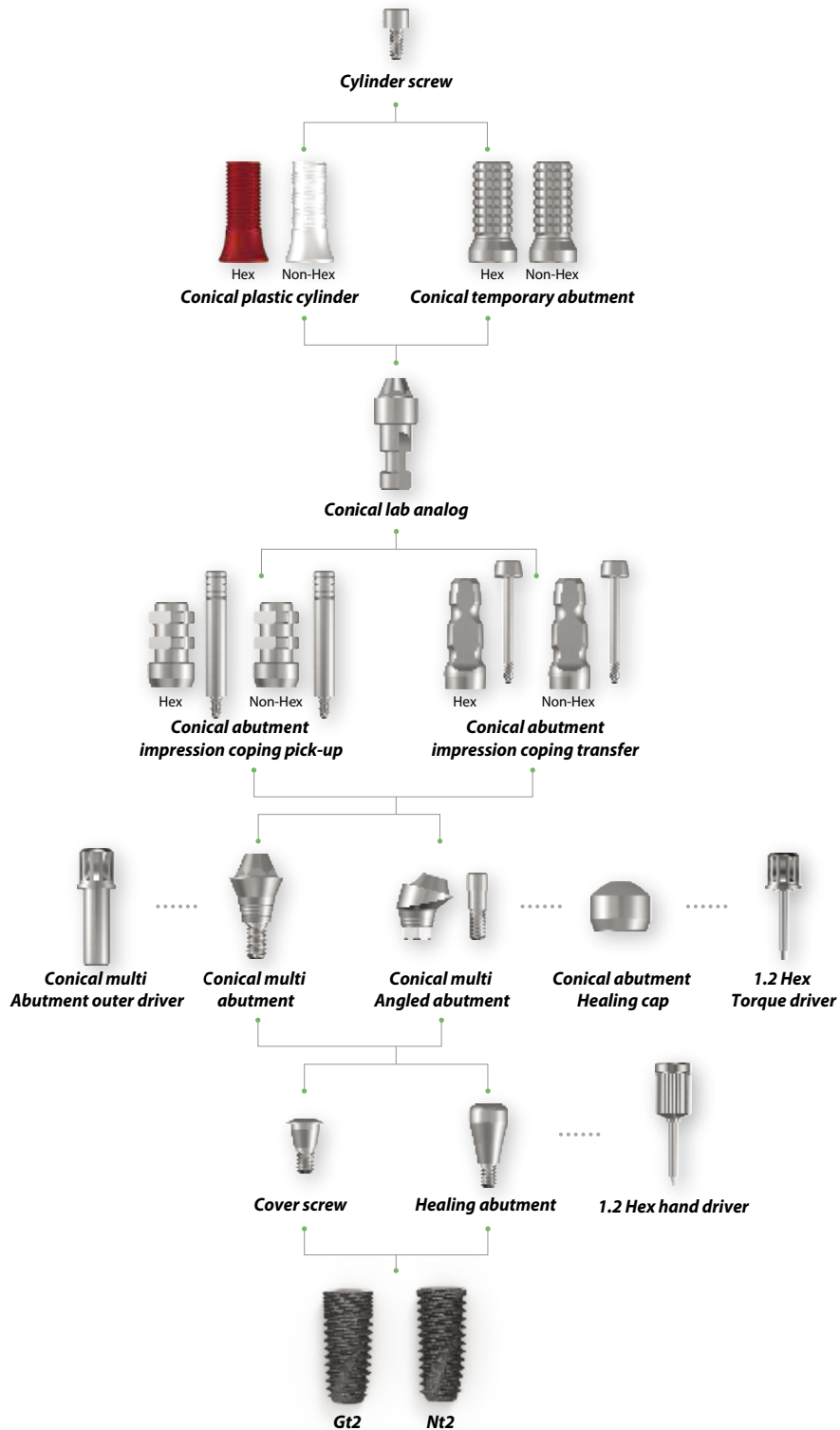
	<i>Hex</i>	<i>Non-Hex</i>
D4.5	S-PSC 45H	S-PSC 45N

Multi-Unit System

 **SYLBUTMENT™**

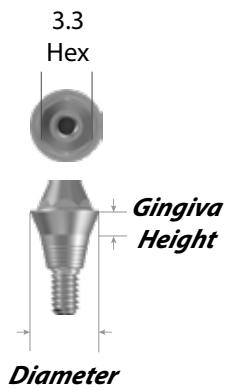


Multi-Unit System Flow Chart



Multi-Unit Submerged Abutment

- Mini
- Regular
- Wide
- Ultra-wide



Conical multi abutment **mini**



	<i>GH 1</i>	<i>GH 2</i>	<i>GH 3</i>	<i>GH 4</i>	<i>GH 5</i>
<i>D4.8</i>	MCMA 4810	MCMA 4820	MCMA 4830	MCMA 4840	MCMA 4850

Conical multi abutment **R/W/U**

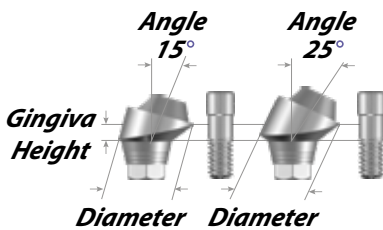


	<i>GH 1</i>	<i>GH 2</i>	<i>GH 3</i>	<i>GH 4</i>	<i>GH 5</i>
<i>D4.8</i>	CMA 4810	CMA 4820	CMA 4830	CMA 4840	CMA 4850

Conical multi angled abutment **mini**



	<i>A</i>	<i>GH 1.5</i>	<i>GH 2.5</i>
<i>D4.8</i>	<i>15</i>	MCMAA 481515 H	MCMAA 482515 H
	<i>25</i>	MCMAA 481525 H	MCMAA 482525 H

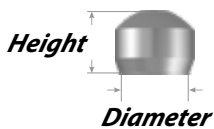


Conical multi angled abutment **R/W/U**



	<i>A</i>	<i>GH 1.5</i>	<i>GH 2.5</i>
<i>D4.8</i>	<i>15</i>	CMAA 481515 H	CMAA 482515 H
	<i>25</i>	CMAA 481525 H	CMAA 482525 H

Conical abutment healing cap **M/R/W/U**



	<i>H 6.0</i>
<i>D4.8</i>	CAHC 600

Conical multi abutment outer driver



	<i>Short (8mm)</i>	<i>Long (15mm)</i>
<i>Hex 3.3</i>	RHV 33 S	RHV 33 L

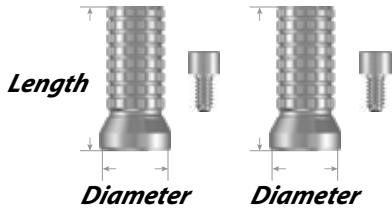
Diameter



Conical lab analog M/R/W/U

D4.8 CLA 48

[Hex] [Non-Hex]

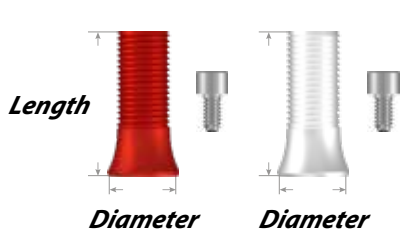


Conical temporary abutment M/R/W/U

Length 12

	Hex	Non-Hex
D4.8	CTPA 48 H	CTPA 48 N

[Hex] [Non-Hex]

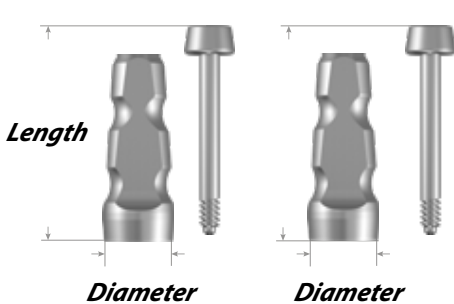


Conical plastic cylinder M/R/W/U

Length 12

	Hex	Non-Hex
D4.8	CPSC 48 H	CPSC 48 N

[Hex] [Non-Hex]



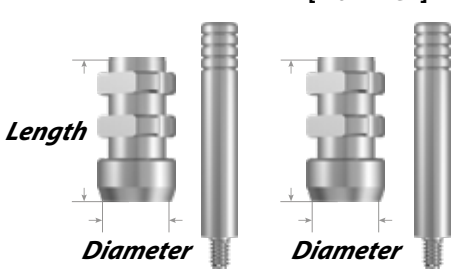
Conical abutment impression coping (Transfer) M/R/W/U

Length 11

Length 15

	Hex	Non-Hex	Hex	Non-Hex
D4.8	CAICT 4811 H	CAICT 4811 N	CAICT 4815 H	CAICT 4815 N

[Hex] [Non-Hex]



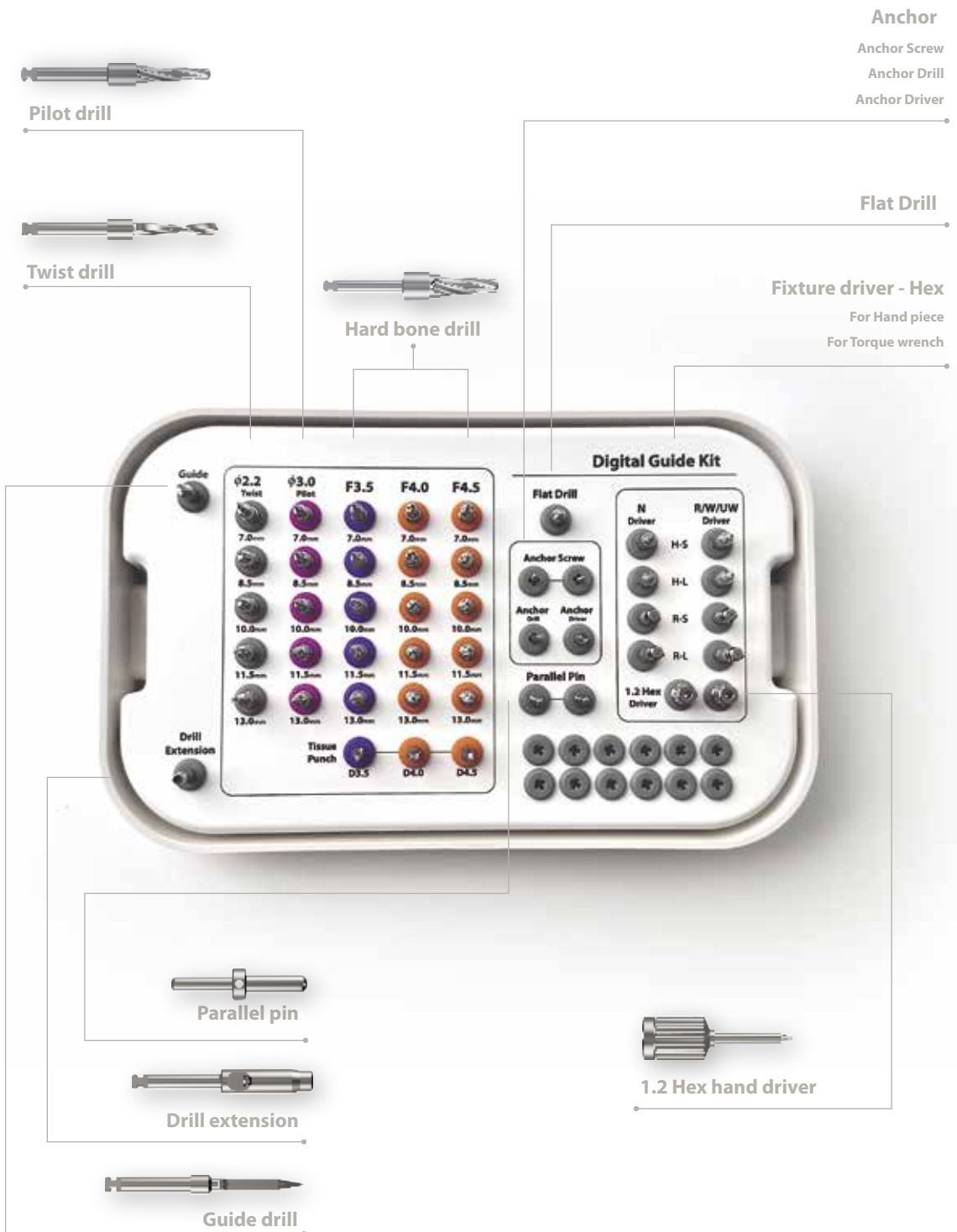
Conical abutment Impression coping (Pick up) M/R/W/U

Length 10

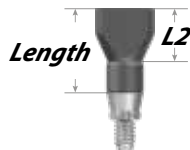
Length 15

	Hex	Non-Hex	Hex	Non-Hex
D4.8	CAICP 4810 H	CAICP 4810 N	CAICP 4815 H	CAICP 4815 N

Digital Guide Kit



Scanbody Abutment



Scanbody Abutment **mini**

Length

L10	MC-SB 100H
L15	MC-SB 150H

Scanbody Abutment **R/W/U**

Length

L7.5	SC-SB 075H
L10	SC-SB 100H
L15	SC-SB 150H

Method

Use with 1.2 Hex hand driver
For Ti-base abutment and Sylblank

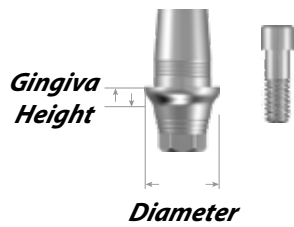
Components

Scanbody abutment + Screw

Usage

7.5mm / 10mm - Use with Intra-Oral Scanner
15mm - For Model Scan

Digital Line-up



Ti-Base Abutment **mini**

D4.5 / GH

GH1.5

M-SP 15H

GH 2.0

M-SP 20H

Ti-Base Abutment **R/W/U**

D4.5 / GH

GH1.5

S-SP 15H

GH 2.0

S-SP 20H



SylBlank **mini**



M-SSMIA 10H

SylBlank **R/W/U**



SSMIA 10H

Usage

Down Connection



Digital Lab Analog **mini**

M-DFLA 35

Digital Lab Analog **R/W/U**

S-DFLA 35

Digital Line-up for Multi



Conical Scanbody for Multi **M/R/W/U**

Length
L7.5

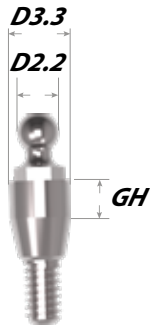
CSC-SB 075H



Conical Digital Lab Analog for Multi **M/R/W/U**

DCLA 48

O-ring Abutment & Components



O-Ring Abutment **mini**

GH 1	M-ORG 100
GH 2	M-ORG 200
GH 3	M-ORG 300
GH 4	M-ORG 400
GH 5	M-ORG 500
GH 6	M-ORG 600
GH 7	M-ORG 700

O-Ring Abutment **R/W/U**

GH 1	S-ORG 100
GH 2	S-ORG 200
GH 3	S-ORG 300
GH 4	S-ORG 400
GH 5	S-ORG 500
GH 6	S-ORG 600
GH 7	S-ORG 700



O-Ring Retianer Set **M/R/W/U**

- Retainer set contains one retainer ring, two O-ring (Orange) for Clinical purpose, and one O-ring (Black) for Labatory.



O-Ring Driver **M/R/W/U**

Short	Long
RHV 24S	RHV 24L

- Outer driver for O-ring abutment is needed.

Denfit Abutment



Denfit Abutment **mini**

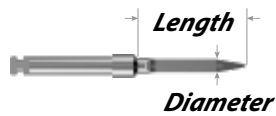
<i>G/H 1</i>	M-LOA 100
<i>G/H 2</i>	M-LOA 200
<i>G/H 3</i>	M-LOA 300
<i>G/H 4</i>	M-LOA 400
<i>G/H 5</i>	M-LOA 500
<i>G/H 6</i>	M-LOA 600

Denfit Abutment **R/W/U**

<i>G/H 1</i>	LOA 100
<i>G/H 2</i>	LOA 200
<i>G/H 3</i>	LOA 300
<i>G/H 4</i>	LOA 400
<i>G/H 5</i>	LOA 500
<i>G/H 6</i>	LOA 600

- Recommended Torque : 30Ncm
- Use 1.2 Hex Driver

Common Components of Surgical Kit



Guide drill

	<i>Diameter</i>	<i>Length</i>
<i>GDR 20B</i>	2.0	15

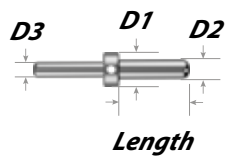
- Easily forms the first hole in the initial drilling
- Marks the direction of the initial drilling in the cortical bone structure
- Only the triangular tip of the drill bit is used
- Bone density is assessed through the guide drill



Drill extension

DRE 002

- To extend the length of the used drills and other surgical equipment handpieces.



Parallel pin

	<i>D1</i>	<i>D2</i>	<i>D3</i>	<i>L</i>
<i>TPP 50</i>	5.0	2.8	2.2	10

- Confirms the direction and distance in bone preparation.
- Confirms the distance of spaces in multi-insertions.



Torque wrench

TRW 400 B

- Used when inserting the fixture and fastening the screw
- Possible 15/25/35N tool adjustment



Fixture driver Hex **mini**

		<i>Hex</i>
<i>For Handpiece</i>	<i>MMHL 002S</i>	2.1
	<i>MMHL 002L</i>	2.1
<i>For Torque wrench</i>	<i>RMHL 002S</i>	2.1
	<i>RMHL 002L</i>	2.1



Fixture driver Hex **R/W/U**

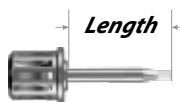
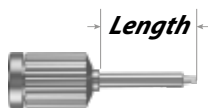
		<i>Hex</i>
<i>For Handpiece</i>	<i>MHL 002S</i>	2.5
	<i>MHL 002L</i>	2.5
<i>For Torque wrench</i>	<i>RHL 002S</i>	2.5
	<i>RHL 002L</i>	2.5

For Handpiece

- Fastened with handpiece engine
- For Handpiece is used to insert and fasten the fixture
- Designed to prevent dropping when picking up the fixture to be fastened

For Torque wrench

- Fastened with torque wrench
- For Torque Wrench is used to insert and fasten the fixture
- Designed to prevent dropping when picking up the fixture to be fastened.



1.2 Hex driver

		<i>Length</i>	<i>Hex</i>
<i>Hand driver</i>	<i>THV 12SB</i>	8	1.2
	<i>THV 12LB</i>	15	1.2
<i>Machine driver</i>	<i>MHV 12SB</i>	8	1.2
	<i>MHV 12LB</i>	15	1.2
<i>Torque driver</i>	<i>RHV 12SB</i>	8	1.2
	<i>RHV 12LB</i>	15	1.2

Hand driver

- Hand driver is used when manually fastening the fixture with the joined abutment and screw

Machine driver

- Driver for engine

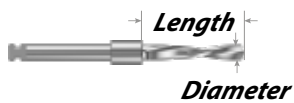
Torque driver

- Driver for fastening torque wrench

Submerged full stop drill surgical kit



Submerged Surgical drills



Twist drill

	<i>Diameter</i>	<i>Length</i>
<i>TDR 22075</i>	2.2	7.5
<i>TDR 22085</i>	2.2	8.5
<i>TDR 2210</i>	2.2	10
<i>TDR 22115</i>	2.2	11.5
<i>TDR 2213</i>	2.2	13
<i>TDR 2215</i>	2.2	15

- Initial hole is formed at the marked region by the guide drill
- Caution is used to the adjacent space's depth and parallel



Pilot drill

	<i>D1</i>	<i>D2</i>
<i>PDR 2230</i>	2.2	3.0

- After the initial drilling the Ø2.2 entry way is expanded to Ø3.0 for the tubal drill entry of both the tapered drill and straight drill



Hard Bone drill

	<i>D1</i>	<i>D2</i>	<i>Length</i>
<i>IPD 35075</i>	2.6	3.3	7.5
<i>IPD 35085</i>	2.6	3.3	8.5
<i>IPD 3510</i>	2.6	3.3	10
<i>IPD 35115</i>	2.6	3.3	11.5
<i>IPD 3513</i>	2.6	3.3	13
<i>IPD 3515</i>	2.6	3.3	15
<i>IPD 40075</i>	3.1	3.8	7.5
<i>IPD 40085</i>	3.1	3.8	8.5
<i>IPD 4010</i>	3.1	3.8	10
<i>IPD 40115</i>	3.1	3.8	11.5
<i>IPD 4013</i>	3.1	3.8	13
<i>IPD 4015</i>	3.1	3.8	15
<i>IPD 45075</i>	3.6	4.3	7.5
<i>IPD 45085</i>	3.6	4.3	8.5
<i>IPD 4510</i>	3.6	4.3	10
<i>IPD 45115</i>	3.6	4.3	11.5
<i>IPD 4513</i>	3.6	4.3	13
<i>IPD 4515</i>	3.6	4.3	15
<i>IPD 50075</i>	4.1	4.8	7.5
<i>IPD 50085</i>	4.1	4.8	8.5
<i>IPD 5010</i>	4.1	4.8	10
<i>IPD 50115</i>	4.1	4.8	11.5
<i>IPD 5013</i>	4.1	4.8	13
<i>IPD 5015</i>	4.1	4.8	15
<i>IPD 55075</i>	4.6	5.3	7.5
<i>IPD 55085</i>	4.6	5.3	8.5
<i>IPD 5510</i>	4.6	5.3	10
<i>IPD 55115</i>	4.6	5.3	11.5
<i>IPD 5513</i>	4.6	5.3	13
<i>IPD 5515</i>	4.6	5.3	15
<i>IPD 60075</i>	5.1	5.8	7.5
<i>IPD 60085</i>	5.1	5.8	8.5
<i>IPD 6010</i>	5.1	5.8	10
<i>IPD 60115</i>	5.1	5.8	11.5
<i>IPD 6013</i>	5.1	5.8	13
<i>IPD 6015</i>	5.1	5.8	15

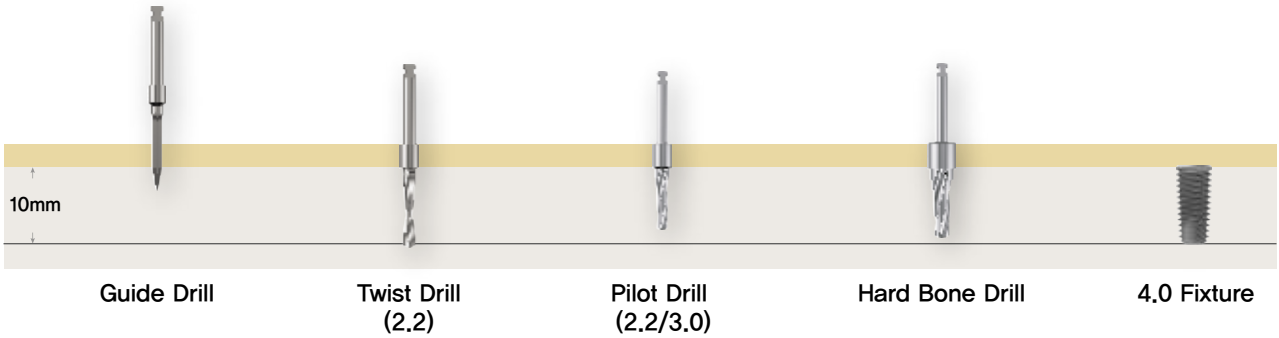
- Used to expand the dimension of the equivalent body size of the fixture to be inserted into the Ø2.2 hole that is formed by twist drilling.

- To minimize bone resistance in order to prevent bone crack, necrosis and others, drills are used in stages starting with the smallest diameter.

- Fixture's own body shape is almost equivalent to the body shape

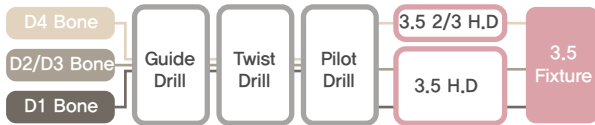
Drilling sequence

mini Regular Wide Ultra-Wide

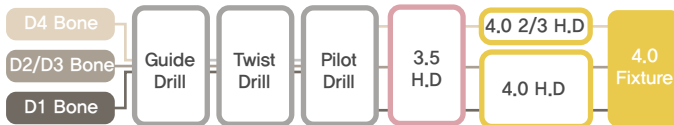


3.5 Fixture

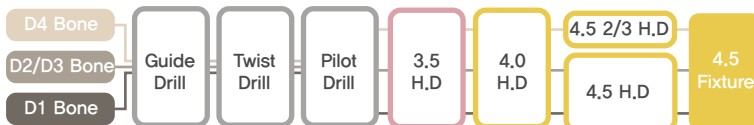
H.D : Hard Bone Drill [D - 0.2]



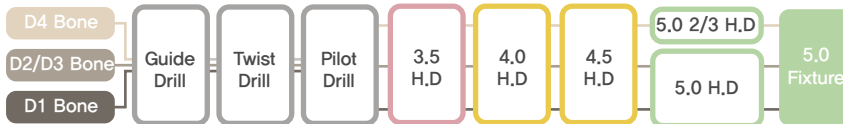
4.0 Fixture



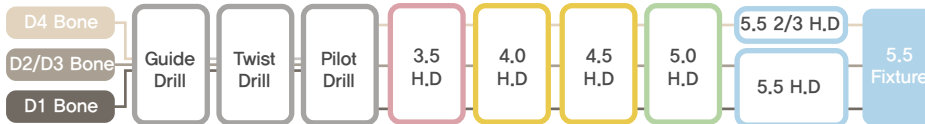
4.5 Fixture



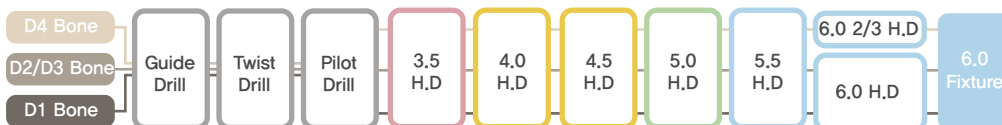
5.0 Fixture



5.5 Fixture



6.0 Fixture



Simple Stopper Kit / 1.2 Hex Kit



Simple Stopper Kit

- L1 : L13mm Taper Drill D3.0 / D3.5 / D4.0 / D4.5 Fixture
- L2 : L13mm Cortical Drill D3.0 / D3.5 / D4.0 / D4.5 Fixture
- With Stopper L7 / L8.5 / L10 / L11.5
- Mini Fixture Driver for Machine and Torque
- Regular Fixture Driver for Machine and Torque
- Torque Wrench (Round type)



1.2 Hex Driver Kit

- 1.2 Hex Driver for Torque Wrench Short / Long
- 1.2 Hex Driver for Hand Short / Long
- 1.2 Hex Driver for Machine Short / Long
- Torque Wrench (Round)

Extra Short / Long Implant Kit



Extra Short Implant Kit

- L1 : L5.5mm D2.2 / D3.0 / D3.5 / D4.0 / D4.5
- Mini Fixture Driver for Machine and Torque
- Regular Fixture Driver for Machine and Torque
- Torque Wrench (Round type)



Extra Long Implant Kit

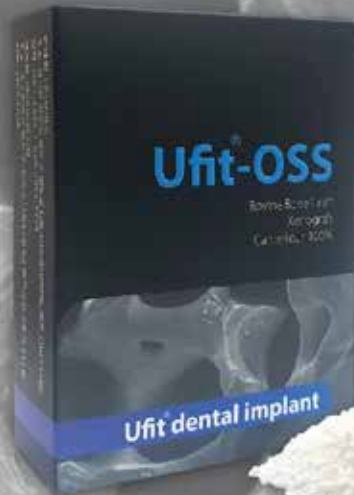
- L1 : L15mm D2.2 / D3.0 / D3.5 / D4.0 / D4.5
- Mini Fixture Driver for Machine and Torque
- Regular Fixture Driver for Machine and Torque
- Torque Wrench (Round type)

Ufit[®]-OSS Bovine Bone Graft



Ufit-Oss Bone Bottle Type

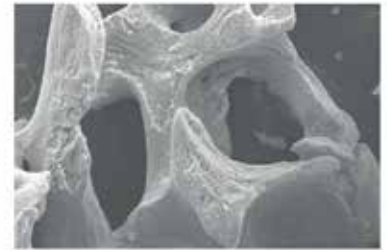
0.15g
0.25g
0.5g
1.0g
2.0g



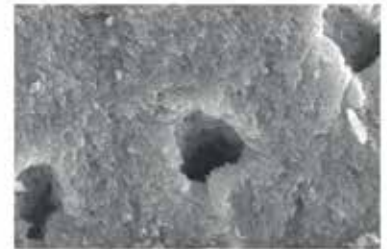
Ufit-OSS[®]

Made from 100% BSE-free,
Australian origin cancellous bovine bone

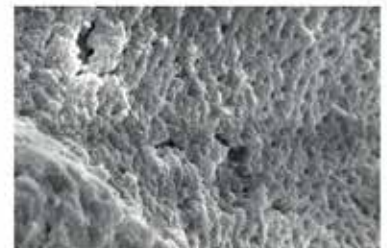
Ufit dental implant



Macropore (x100)



Mesopore (x3000)



Micropore (x2000)

**Made from 100% BSE-free,
Australian origin cancellous
bovine bone**

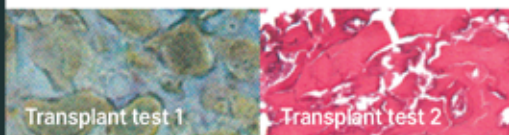


Cancellous Bone 100%

According to the World Organization for Animal Health (OIE), Australian origin bovine bone is classified as 100% BSE-free.

► Removal of lipids, organic matter, and residual chemicals.

**Stimulates new bone formation,
growth in grafted site**



Transplant test 1

Transplant test 2

Storage and release of growth factors

► Due to their interconnected porosity and natural structure, blood quickly deposits and adsorbs serum proteins, making the transplant site easier to revascularize and promoting the formation and survival of new bone.

Blood absorption structure

Multiporous structure, maximizing blood vessel ingrowth.

► Promotes the activity of osteoblasts and osteoclasts

High hydrophilicity

3D porous structure ► High hydrophilicity

**Good Maintenance of
bone volume**

100% Pure Mineral Bone Phase

Removal of Calcium carbonate and calcium oxide

► Good Maintenance of bone volume

Particle : 0.2~1.0mm

Volume : 0.15g / 0.25g / 0.5g / 1.0g / 2.0g

Ufit[®] dental implant

Copyright © 2024 by T.Strong INC. All Right Reserved.



ISO 13485

www.uftimplant.com

T.Strong.Inc

56, Seobu-ro 346beon-gil, Jinyeong-eup, Gimhae-si,
Gyeongsangnam-do, 50870, Rep.of KOREA

tel. +82 55 342 1771 **fax.** +82 55 342 1775

